



The Annual Review Conference for the Fiscal Year of 2008

March 30th

Developmental Biology

9:30 -9:55 K. Hatta
9:55-10:20 K. Watanabe

Cell Motility and Cytoskelton

10:20-10:45 T. Shimmem
11:00-11:25 Y. Mineyuki
11:25-11:50 K. Oiwa

Cell Biology and Molecular Biology

12:50-13:15 M. Sakaguchi
13:15-13:40 H. Nishitani
13:40-14:05 T. Osumi
14:05-14:30 T. Koide

Bioenergetics and Hemoproteins

14:45-15:10 H. Shimada
15:10-15:35 J. Shen
15:35-16:00 S. Yoshikawa
16:00-16:25 T. Yonetani

March 31st

Protein Crystallography

9:30- 9:55 Y. Higuti
9:55-10:20 T. Tsukihara
10:20-10:45 M. Yamamoto
11:00-11:25 Y. Shiro

Vibrational Spectroscopy

11:25-11:50 T. Ogura
12:50-13:15 T. Kitagawa

Synthetic and Theoretical Approaches

13:15-13:40 H. Fujii
13:40-14:05 T. Sugimura
14:05-14:30 A. Oshiyama

Site visit to Picobiology Institute

15:00-16:00

Evaluation Committee Members

Koreaki Ito

Emeritus Professor, Kyoto University

Isao Morishima

Emeritus Professor, Kyoto University

Tsuneo Omura

Emeritus Professor, Kyushu University

Sergio Papa

Professor, University of Bari (Italy)

Jean-Luc Popot

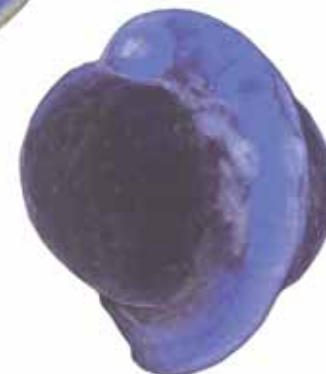
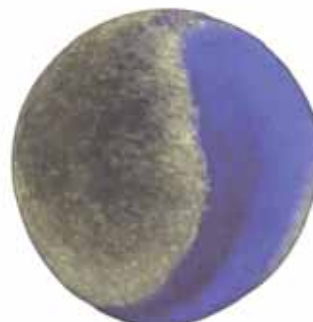
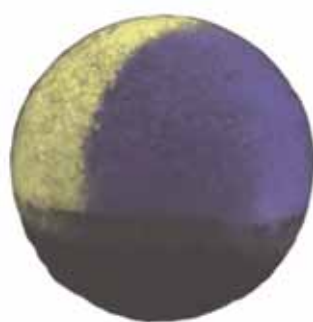
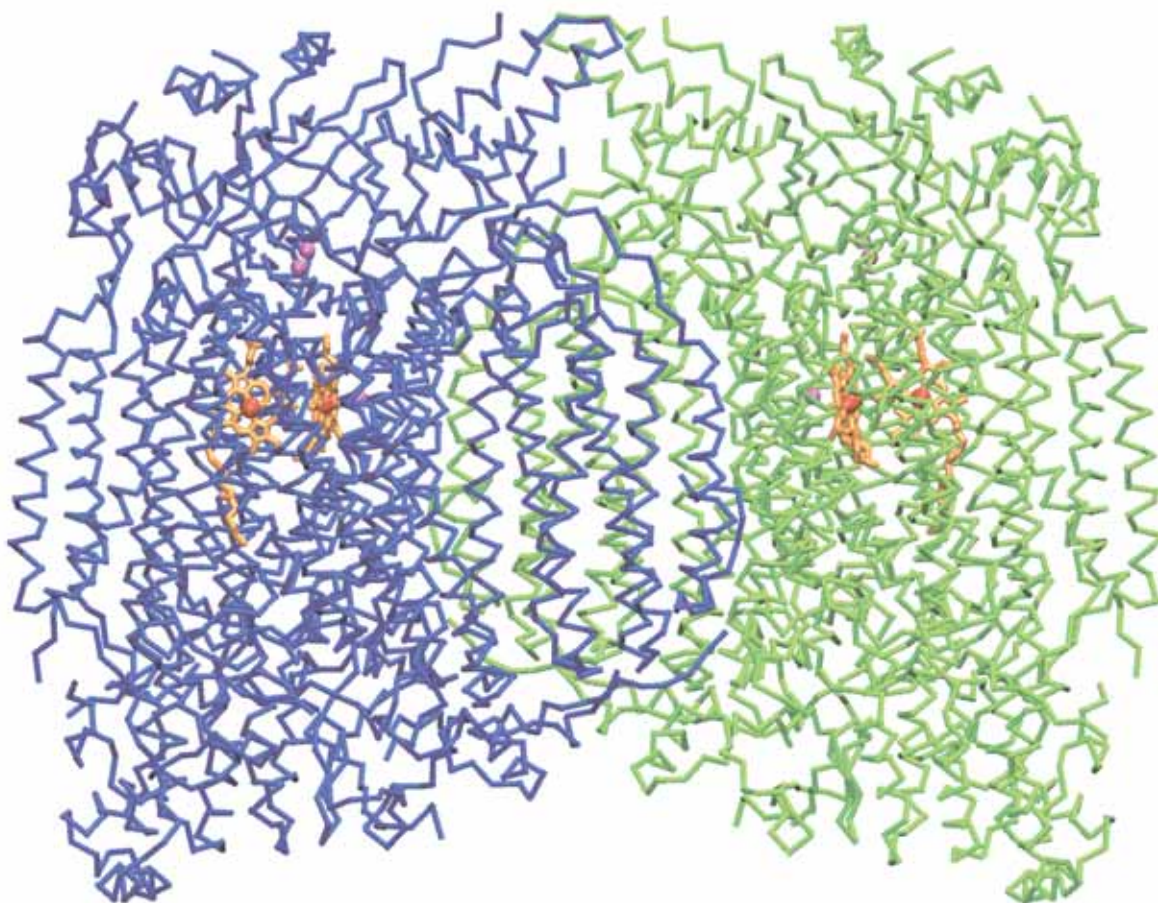
Professor, Université Paris-7 (France)

Denis L. Rousseau

Professor, Albert Einstein College of Medicine (USA)

2009年 3月 30日 (月) - 31 (火)

先端科学技術支援センター・大ホール(<http://www.cast.jp/>)



世話人: 吉川 信也(拠点リーダー)

〒678-1297

兵庫県 赤穂郡 上郡町 光都 3-2-1

兵庫県立大学大学院 生命理学研究科 生命科学専攻

<http://www.sci.u-hyogo.ac.jp/life/GCOE/Index-J.html>